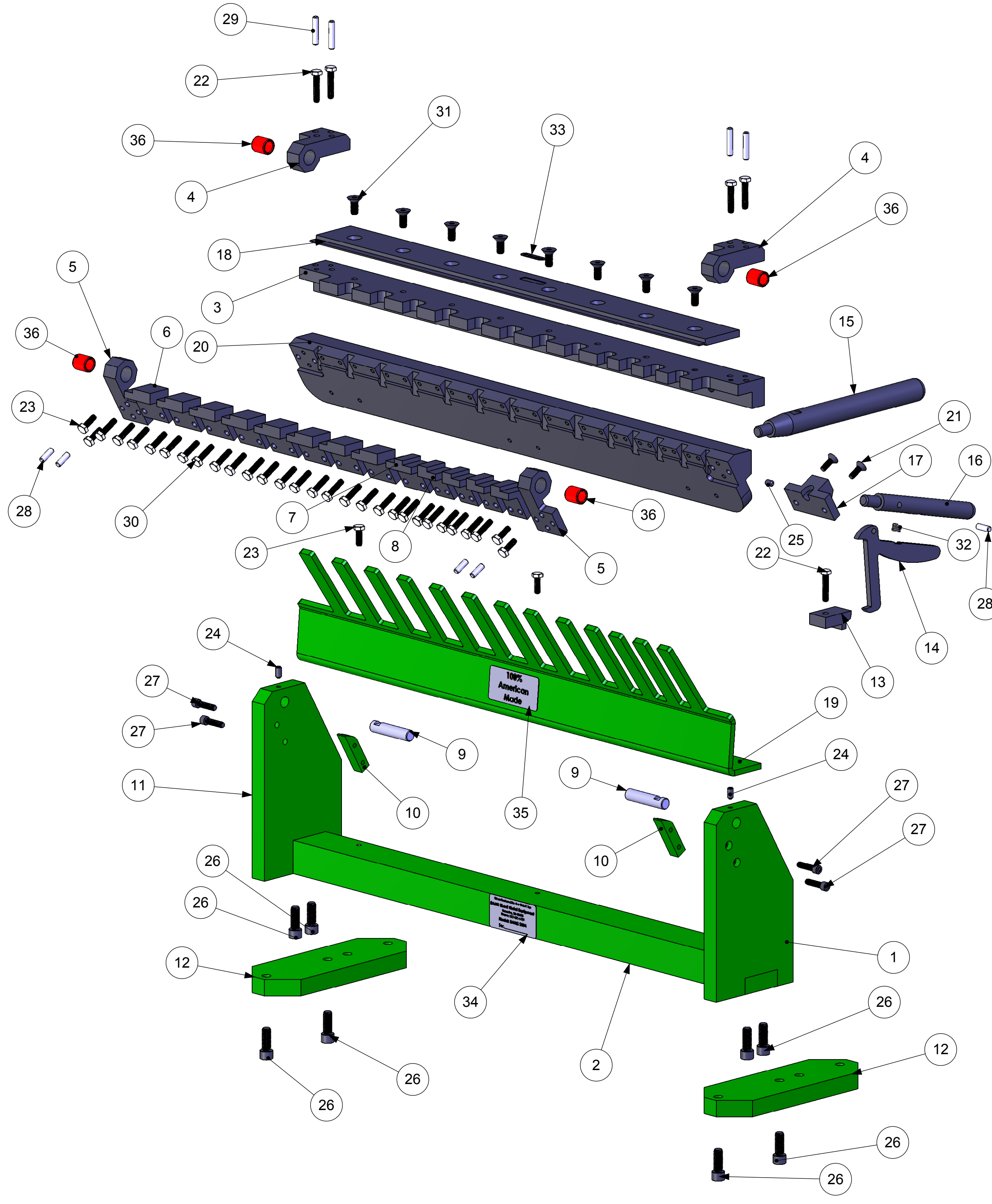


REVISIONS				
ZONE	REV.	DESCRIPTION	DATE	APPROVED
-	-	See Sheet1	-	-

F
E
D
C
B
A



RAMS 2004 24" CLEAT BENDER

ITEM NO.	QTY.	PART NUMBER	DESCRIPTION
1	1	CB-1001	SIDE PLATE (LEFT)
2	1	CB-1002	MAIN BAR
3	1	CB-1004-DURA BAR	TOP LEAF PLATE
4	2	CB-1008	TOP LEAF HINGE
5	2	CB-1010	LOWER LEAF HINGE
6	8	CB-1011	STEP BLOCK #3
7	1	CB-1012	STOP BLOCK #2
8	4	CB-1013	STEP BLOCK #1
9	2	CB-1014	SHAFT
10	2	CB-1015	STOP BLOCK
11	1	CB-1016	SIDE PLATE (RIGHT)
12	2	CB-1017	FOOT PADS
13	1	CB-1018	HANDLE BLOCK
14	1	CB-1019	HANDLE LOCK
15	1	CB-1020	HANDLE
16	1	CB-1021	LOWER HANDLE
17	1	CB-1022	LOWER HANDLE BLOCK
18	1	CB-1026	BLADE
19	1	CB-1029	COMB
20	1	CB-1034	LOWER LEAF EXTRUSION
21	2	CB-1031	1/4-20 X 3/4" LONG FLAT SOCKET HEAD CAP SCREW
22	5	CB-1032	1/4-20 X 1 1/4" LONG HEX BOLT
23	6	CB-1033	1/4-20 X 3/4" LONG HEX BOLTS
24	2	CB-1035	1/4-20 X 1/2" LONG SOCKET SET SCREW
25	1	CB-1036	1/4-20 X 3/8" LONG SOCKET SET SCREW
26	8	CB-1037	3/8-16 X 1" LONG SOCKET HEAD CAP SCREW
27	4	CB-1038	1/4-20 X 1" LONG SOCKET HEAD CAP SCREW
28	5	CB-1039	1/4" DIA X 3/4" LONG DOWEL PIN
29	4	CB-1040	1/4" DIA X 1 1/4" LONG DOWEL PIN
30	26	CB-1041	1/4-20 X 1" LONG HEX BOLTS
31	8	CB-1043	5/16-18 X 3/4" LONG FLAT SOCKET HEAD CAP SCREW
32	1	LC-059E-5-M	LEE HANDLE SPRING
33	1	20 GA MAX	LABEL, 20 GA MAX
34	1	RAMS 2004	SERIAL No. TAG, RAMS 2004
35	1	Made in the USA	LABEL, MADE IN USA
36	4	B-812	BEARING

DIMENSIONS ARE IN INCHES
 TOLERANCES:
 FRACTIONAL ± 1/16
 ANGULAR: MACH ± BEND ±
 TWO PLACE DECIMAL ±.01
 THREE PLACE DECIMAL ±.005

	NAME	DATE
DRAWN	JAS	3/15/06
CHECKED	SSL	12/11/08
ENG APPR.		
MFG APPR.		
Q.A.		

HORIZON SYSTEMS MACHINING
 9121 58TH PLACE
 KENOSHA, WI 53144
 PH: 262-605-1122
 FAX: 262-605-1198

THE INFORMATION CONTAINED IN THIS DRAWING IS THE SOLE PROPERTY OF HORIZON SYSTEMS MACHINING. ANY REPRODUCTION IN PART OR AS A WHOLE WITHOUT THE WRITTEN PERMISSION OF HORIZON SYSTEMS MACHINING IS PROHIBITED.

MATERIAL	FINISH

TITLE: RAMS-2004 CLEAT BENDER		
SIZE	DWG. NO.	REV
C	RAMS-2004	E
SCALE: 1:4		SHEET 2 OF 2